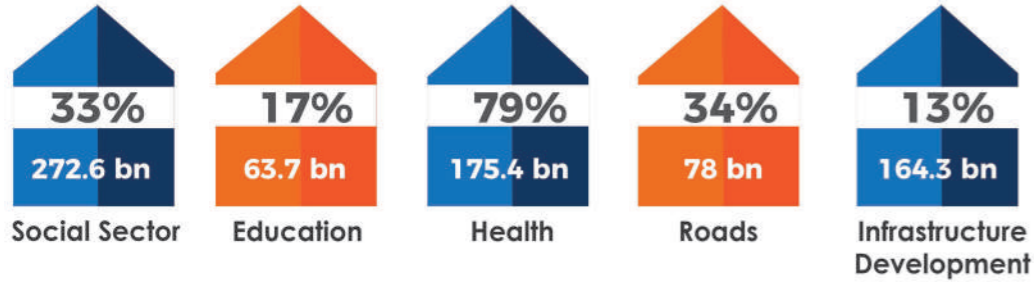


## MAJOR INCREASES IN SECTORAL ALLOCATIONS FY 2022-23



### HEALTH



**Rs. 3.1 Billion**  
Revamping of DHQ & THQ Hospitals

**Rs. 1.6 Billion**  
Integrated Reproductive Maternal New Born & Child Health

**Rs. 127 Billion**  
Universal Health Insurance Program

**Rs. 1 Billion**  
Establishment of Nursing University at PKLI

### EDUCATION

**Rs. 4.8 Billion**  
Afternoon Schools Program

**Rs. 1.5 Billion**  
Punjab Non-Formal Education

**Rs. 1 Billion**  
Retrofitting of Partially Dangerous School Buildings

**Rs. 0.5 Billion**  
Replenishment of Shelter-less Schools in Punjab

**Rs. 5.5 Billion**  
Missing Facilities & Constructions of Addl. Classrooms

**Rs. 0.4 Billion**  
Establishment of 04 Special Education Centers

**Rs. 2.1 Billion**  
Establishment of Universities in 05 major Cities

**Rs. 1.5 Billion**  
Provision of Laptops

## SECTOR WISE ALLOCATIONS IN FY 2022-23

Sector	Allocation (IN RS BILLION)
<b>SOCIAL SECTORS</b>	
Education	56.7
Health & Population Welfare	174.9
Water Supply & Sanitation	11.9
Social Welfare	1.6
Women Development	0.9
LG&CD	19
Sports & Youth Affairs	7.5
<b>INFRASTRUCTURE DEVELOPMENT</b>	
Roads	80.7
Irrigation	27.6
Energy	5
Public Buildings	29.5
Urban Development	21.3
<b>PRODUCTION SECTORS</b>	
Agriculture, Livestock & Food	19.5
Forestry, Wildlife & Fisheries	6.5
Industries, Commerce, Investment & Skills Development	12.5
Mines & Minerals	1.5
Tourism	1.2
<b>OTHERS</b>	
Environment & Climate Change	5
Information, Culture & Archeology	1.2
Auqaf & Religious Affairs	0.6
Human Rights & Minority Affairs	2.5
Planning & Development	28
<b>SERVICES</b>	
Governance & IT	6.2
Labour & HR	0.5
Transport	6.3
Emergency Services (1122)	1.8
<b>SPECIAL PROGRAMS &amp; INITIATIVES</b>	
Special Programs & Public Partnership	154.5



## DEVELOPMENT PORTFOLIO 2022-23

Planning & Development Board  
Government of the Punjab

IMPROVING LIVES BY PROMOTING  
INCLUSIVE AND SUSTAINABLE  
DEVELOPMENT

# روشن راہیں نیا سویرا



## SALIENT FEATURES OF DEVELOPMENT PORTFOLIO 2022-23



Guiding Principles  
ADP 2022-23

Foreign Assisted Portfolio  
FY 2022-23

USD 2.603 Million	USD 243.363 Million	USD 258 Million	USD 4.59 Million	USD 15.81 Million	USD 1.83 Million	USD 4 Million	USD 15 Million

## MAJOR INITIATIVES FOR 2022-23

<b>Rs. 31.5 billion</b> Sustainable Development Program for South Punjab	<b>Rs. 125.3 BILLION</b> Universal Health Insurance Program	<b>Rs. 58.5 BILLION</b> Sustainable Development Program
<b>Rs. 10 BILLION</b> Road Rehabilitation Program	<b>Rs. 6.0 BILLION</b> Correctional Facilities Revamping Program	<b>Rs. 1.6 BILLION</b> Rehabilitation of dual carriageway Kasur Depalpur (98.95 km)
<b>Rs. 3.6 BILLION</b> Punjab Resilient and Inclusive Agriculture Transformation	<b>Rs. 1 BILLION</b> Establishment of Nursing University at PKLI	<b>Rs. 1 BILLION</b> Provision of Classrooms / Furniture to Graduate Colleges
<b>Rs. 27 BILLION</b> Chaubara Branch Canal Construction Project - Greater Thal Canal (Phase-II)	<b>Rs. 4 BILLION</b> Priority Program	
<b>Rs. 4.8 Billion</b> Afternoon Schools Program		

## SMART MONITORING OF DEVELOPMENT PROJECTS STEP TOWARDS DIGITAL PUNJAB

